



How to setup Chess Board - Easy

By

G Bud Games
<https://gbud.in>

July 24, 2021

Contents

1	How to setup Chess Board - Easy	3
1.1	Squares in chess board	3
1.2	Ranks and files of chess board	8
1.2.1	Rank in chess	8
1.2.2	File in Chess	10
1.3	Piece arrangement	12
1.4	Colors of chess pieces	12
1.5	Initial setup of chess board	12
1.6	Staunton chess set	17

List of Figures

1.1	Squares in a chess board	4
1.2	Column names at chess board	4
1.3	Row numbers at chess board	5
1.4	Names of Chess squares	5
1.5	Default position of white king at chess board	6
1.6	Default position of black queen at chess board	6
1.7	a1 square at chess board	7
1.8	h8 square at chess board	7
1.9	Rank in a chess board	8
1.10	Rank 1 in a chess board	9
1.11	Rank 8 in a chess board	9
1.12	File in a chess board	10
1.13	A file in a chess board	11
1.14	H file in a chess board	11
1.15	Height of chess pieces	12
1.16	Initial setup of chess board	13
1.17	Queen's position at chess board	14
1.18	King's position at chess board	14
1.19	Knight's position at chess board	15
1.20	Rook's position at chess board	15
1.21	Bishop's position at chess board	16
1.22	Pawn's position at chess board	16

Chapter 1

How to setup Chess Board - Easy

This page provides the instructions for setting up chess board before beginning the game. The instructions are easy to follow for beginners and kids. Easily learn the piece setup through chess board setup diagrams given below for both white and black pieces.

1.1 Squares in chess board

The square board consists of [64 squares](#), with alternating pattern of black and white. Each square is identified by the combination of [column name](#) and [row number](#). The squares are referred between [a1](#) and [h8](#). Each column is identified by the letters a to h. Each row is identified by the number between 1 to 8 starting from the row close to the white player. For example, the white king's default position is [e1](#) and black queen's default position is [d8](#).

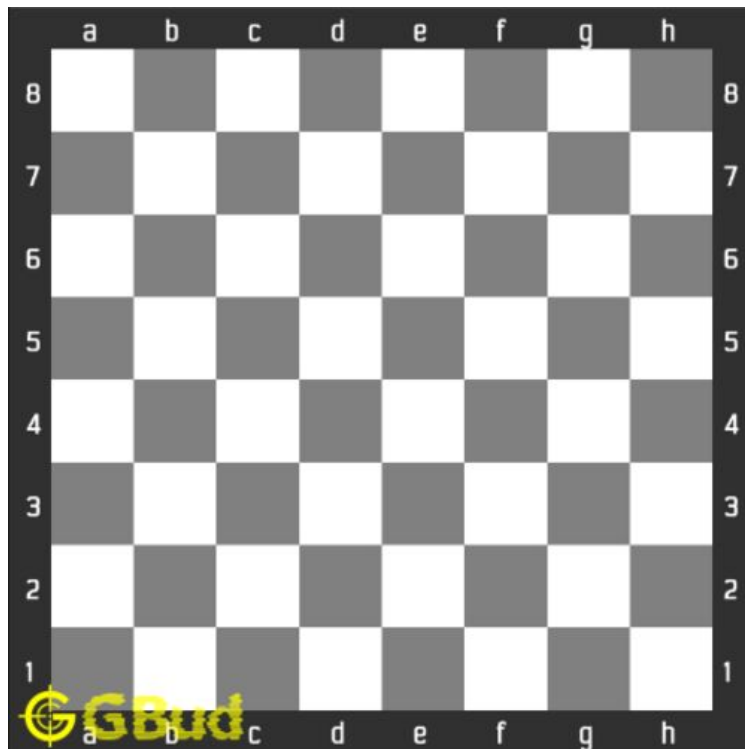


Figure 1.1: Squares in a chess board

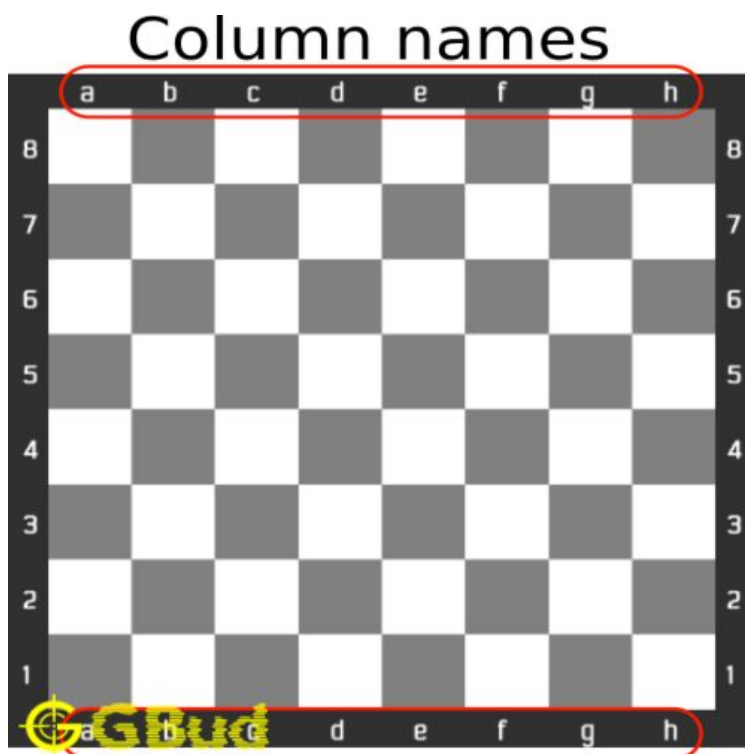


Figure 1.2: Column names at chess board

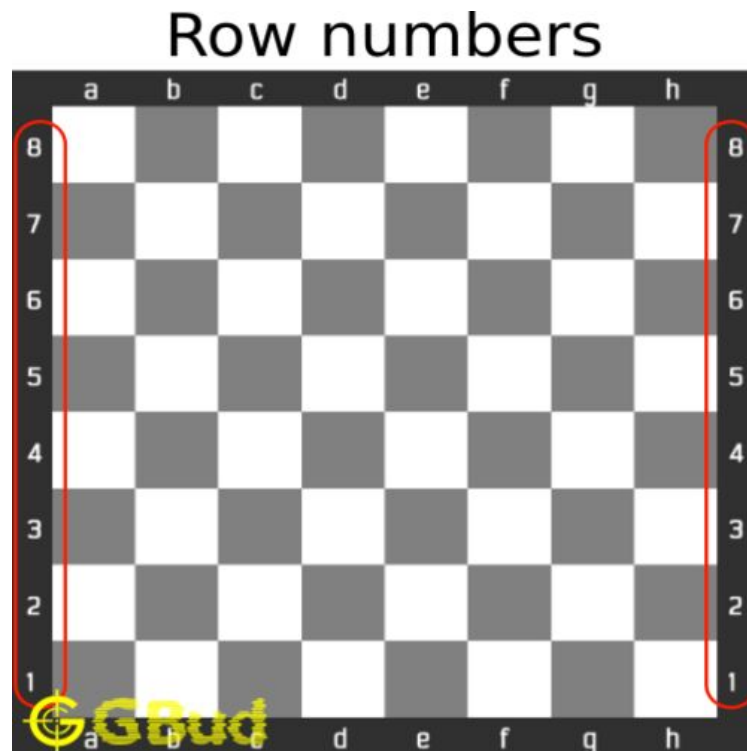


Figure 1.3: Row numbers at at chess board

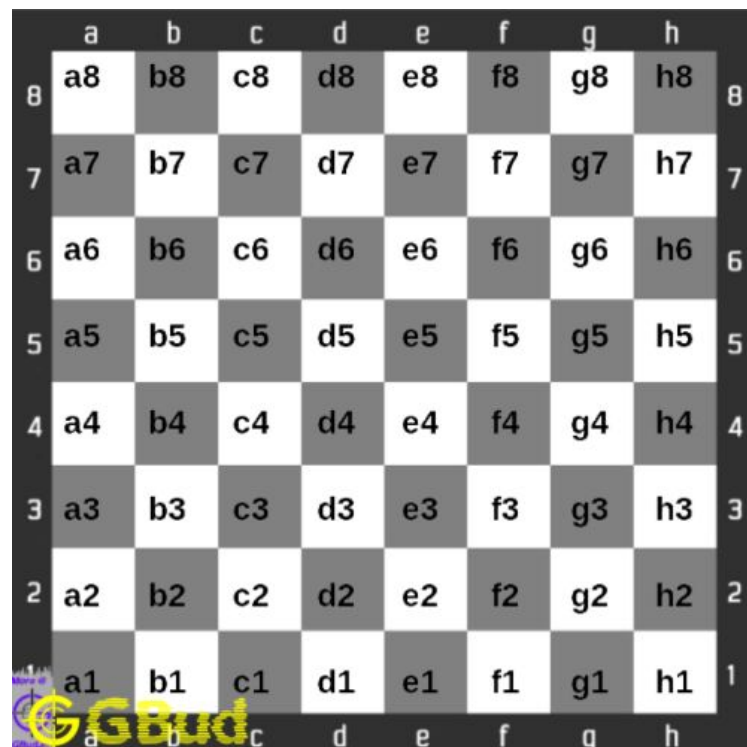


Figure 1.4: Names of Chess squares

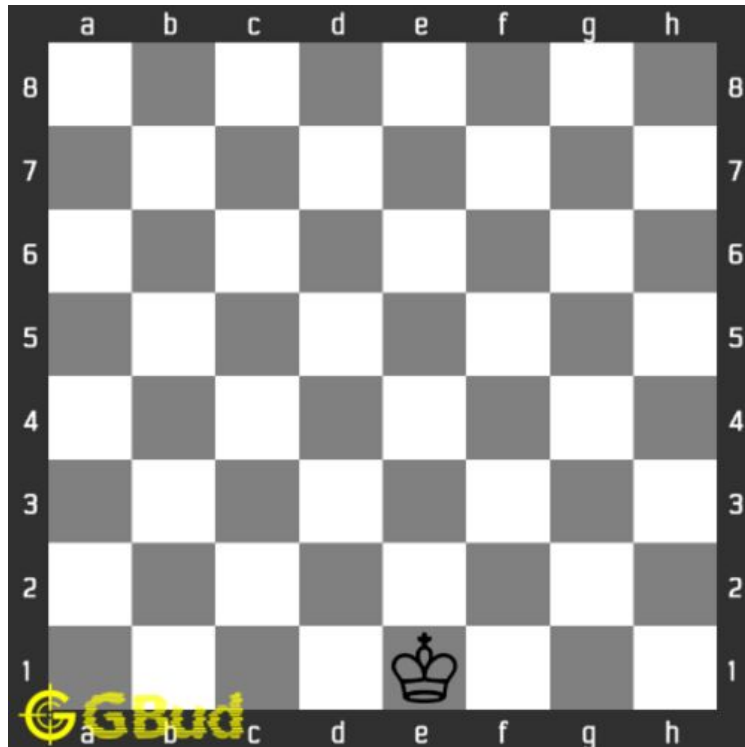


Figure 1.5: Default position of white king at chess board

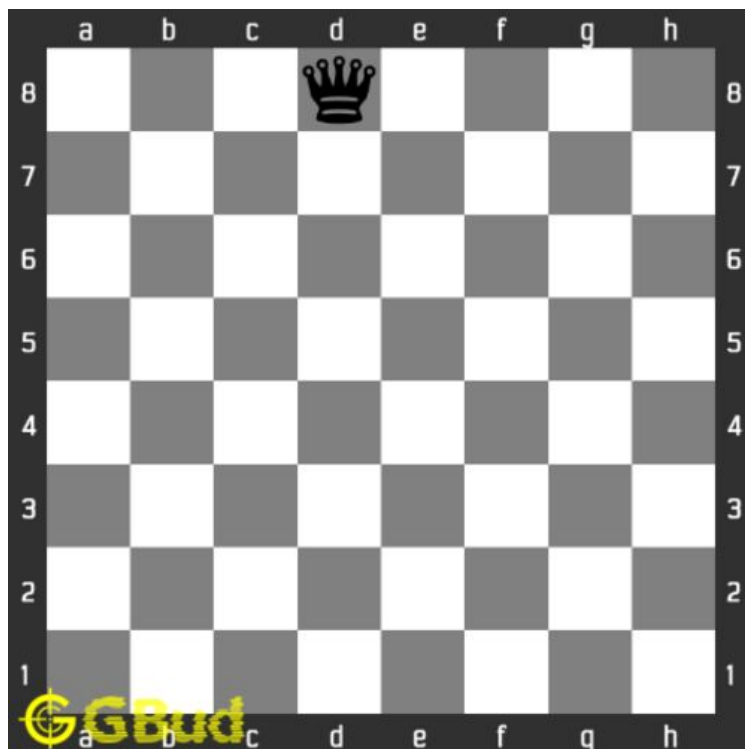


Figure 1.6: Default position of black queen at chess board

The chess board is setup in such a way that the square **a1** is at the left side of the white player. The player of black pieces gets **h8** on their left.

This means irrespective of the color you choose, i.e, either black or white, the board position will have the dark square at your bottom left.

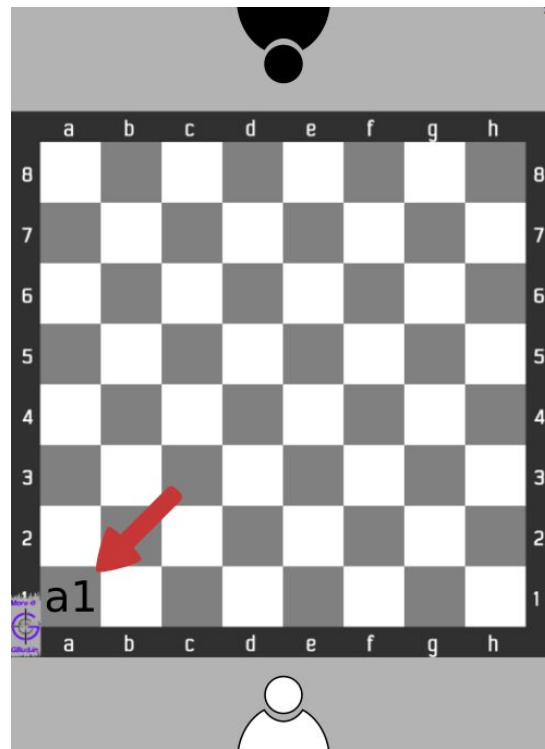


Figure 1.7: a1 square at chess board

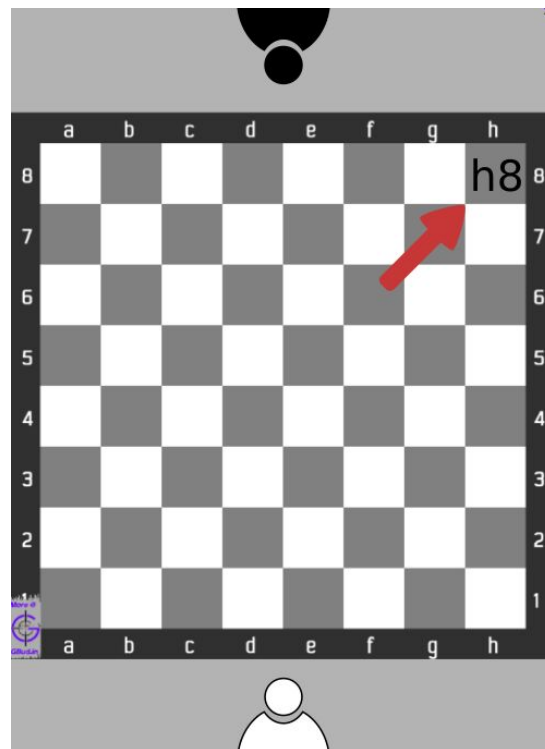


Figure 1.8: h8 square at chess board

1.2 Ranks and files of chess board

Each **row** and **column** at the chess board is called **rank** and **file** respectively.

1.2.1 Rank in chess

Each row that goes across the chess board horizontally is called **rank**. The rank is identified by the number. Rank starts from 1 and ends at 8. The **rank 1** is closer to the white player and **rank 8** is closer to the black player.

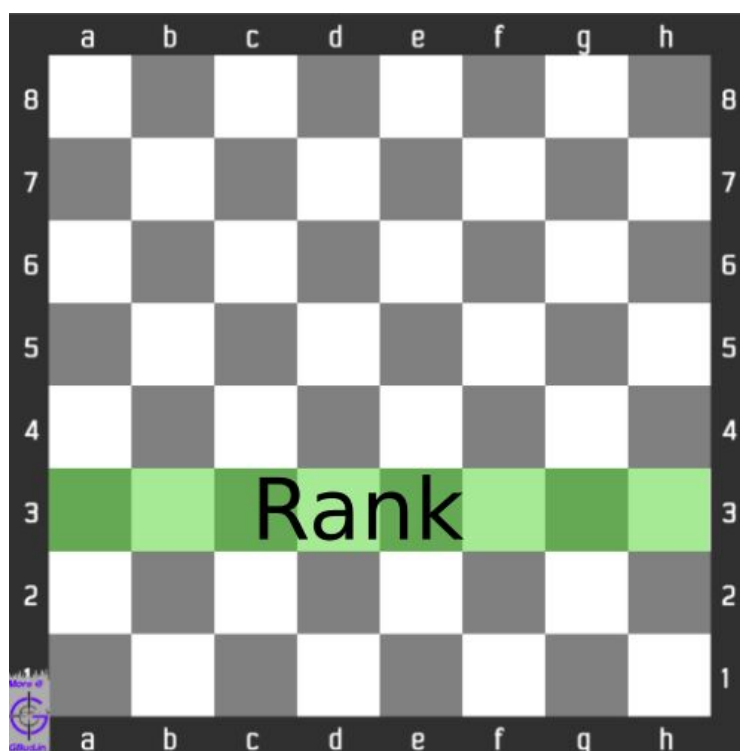


Figure 1.9: Rank in a chess board

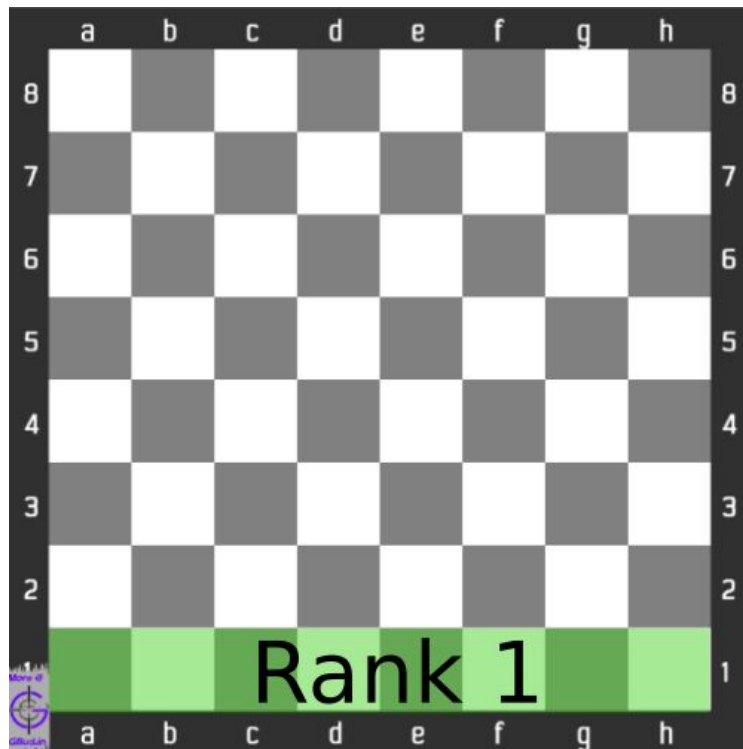


Figure 1.10: Rank 1 in a chess board

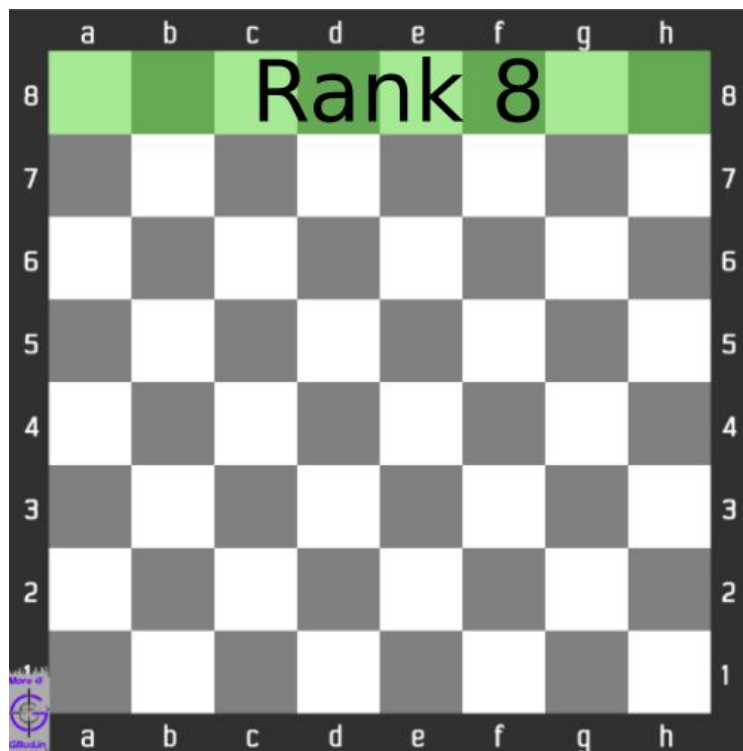


Figure 1.11: Rank 8 in a chess board

1.2.2 File in Chess

Each column in chess board is called a **file**. Files are referred by the alphabets a to h. The **a** file is at the left most position to white player while **h** file is at the left most position to black player.

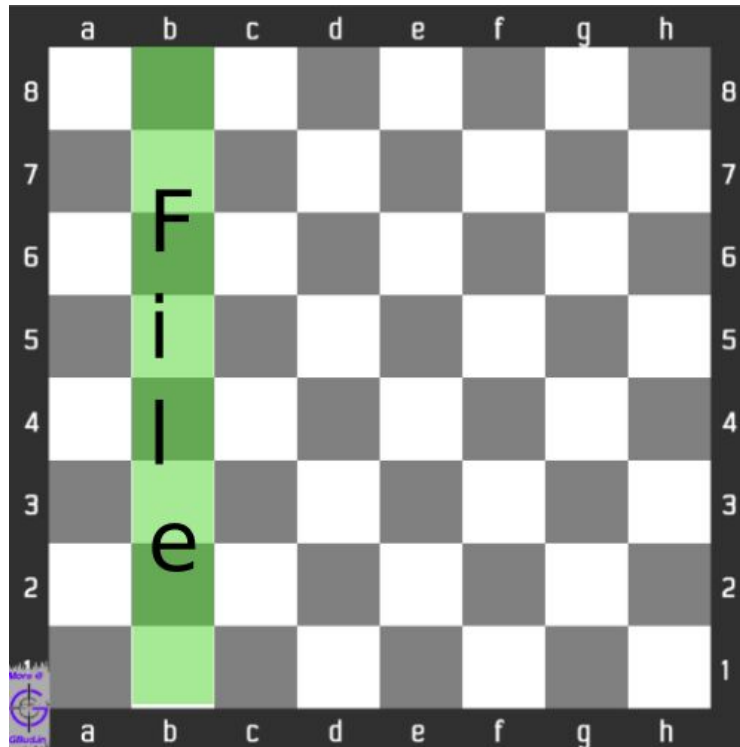


Figure 1.12: File in a chess board

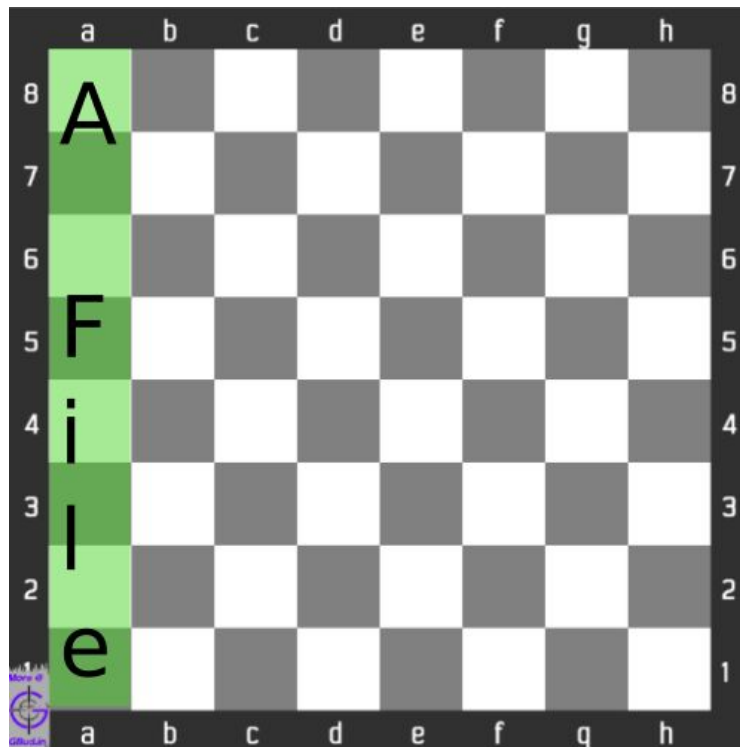


Figure 1.13: A file in a chess board

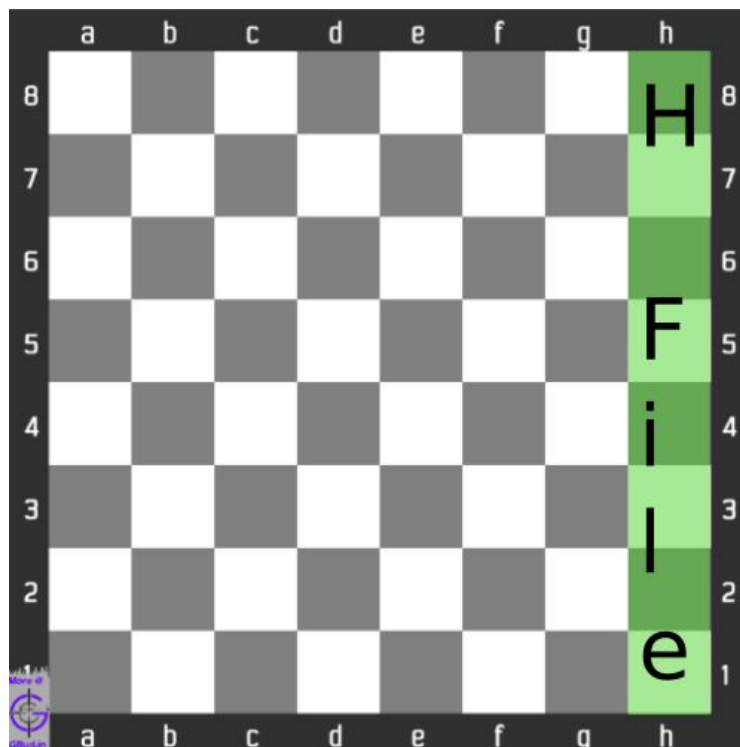


Figure 1.14: H file in a chess board

1.3 Piece arrangement

Please read the detailed instruction of [chess board arrangement](#) of chess pieces

1.4 Colors of chess pieces

Two colors primarily exist in each chess set. One is generally lighter in colour or white. Other one is dark in color or black. Each player gets **16 pieces**. The pieces of chess are

1. **King** - 1 No
2. **Queen** - 1 No
3. **Rook** - 2 Nos
4. **Knight** - 2 Nos
5. **Bishop** - 2 Nos
6. **Pawn** - 8 Nos

The pieces vary in height. The shortest piece is **Pawn** and the tallest piece is **King** as shown in the [photograph of chess pieces](#) which shows the height variation among chess pieces.



Figure 1.15: Height of chess pieces

1.5 Initial setup of chess board

The [initial chess board setup](#) is arrived by arranging the pieces in the following manner.

- **Rook** is placed at the [corners a1, a8, h1 and h8](#)
- **Knight** is placed next to the rank at first and eighth [rank](#) and [b and g file](#)

- **Bishop** is placed next to **King** and **Queen** at the files **c** and **f**
- **Queen** is placed at the square same as its colour. White Queen is placed at **d4** and Black queen is placed at **d8**.
- **King** is placed at **e1** and **e8** .
- **pawns** occupy the **second and eighth rank** .

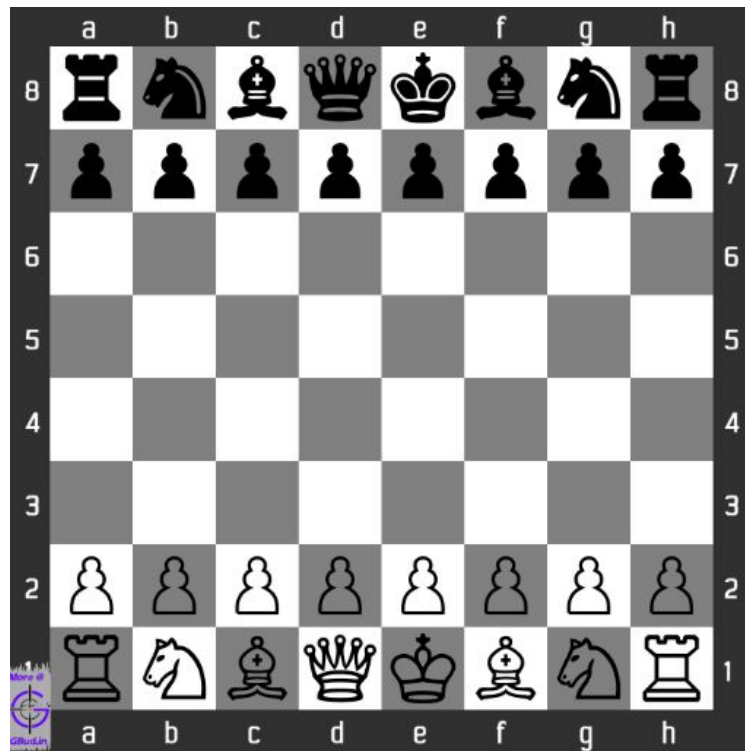


Figure 1.16: Initial setup of chess board

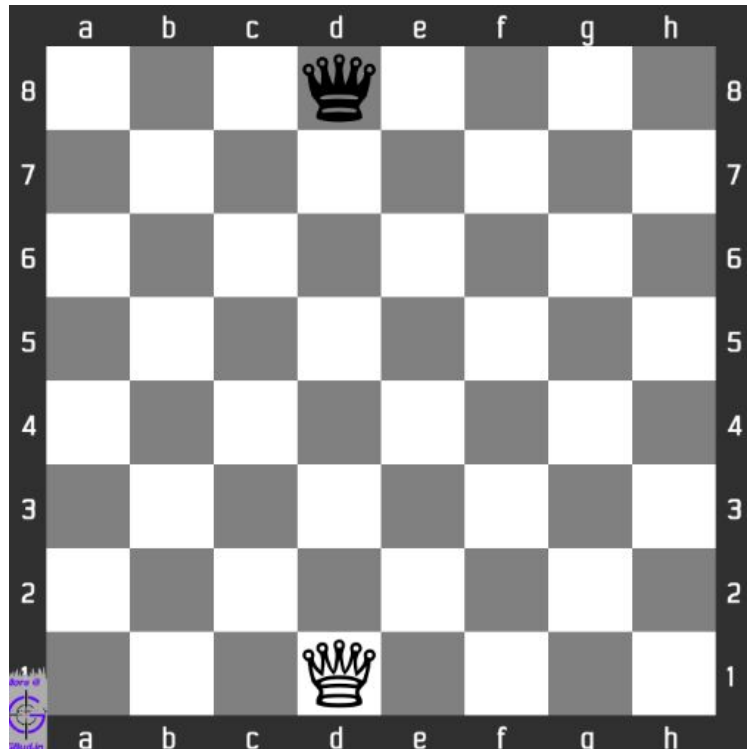


Figure 1.17: Queen's position at chess board

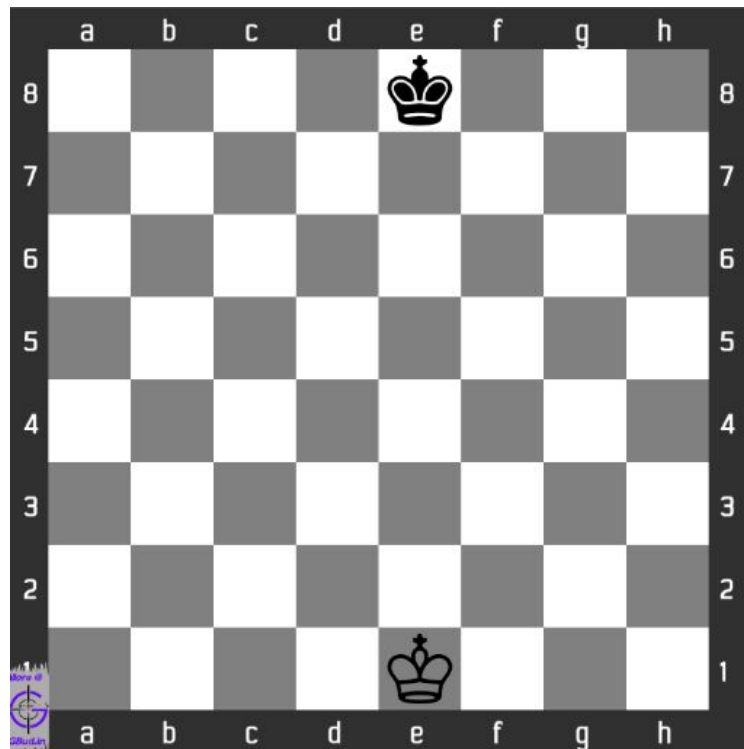


Figure 1.18: King's position at chess board

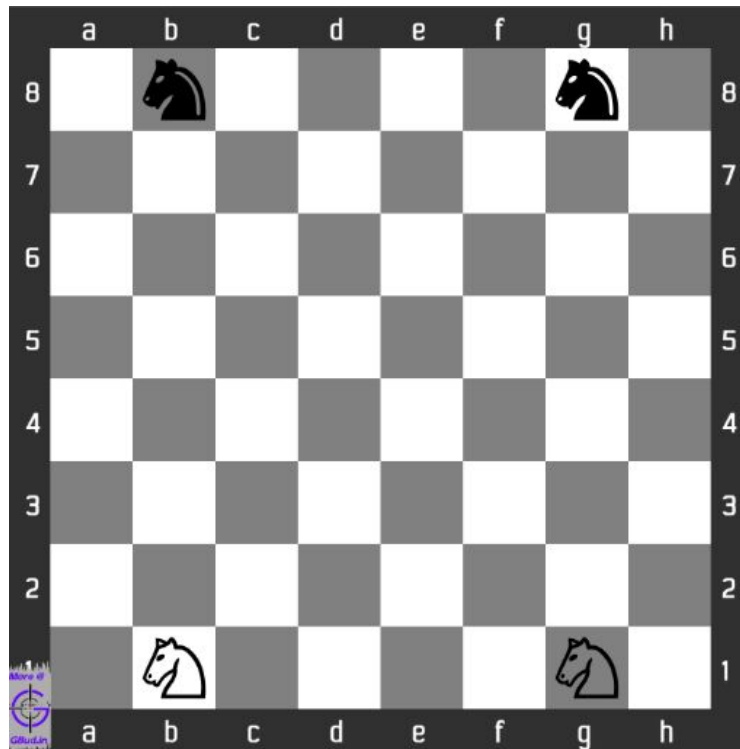


Figure 1.19: Knight's position at chess board

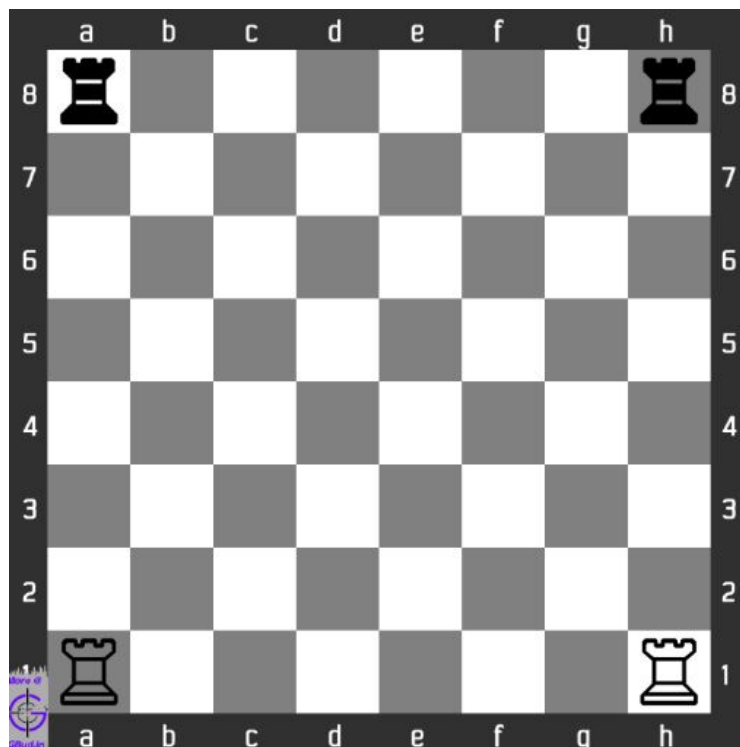


Figure 1.20: Rook's position at chess board

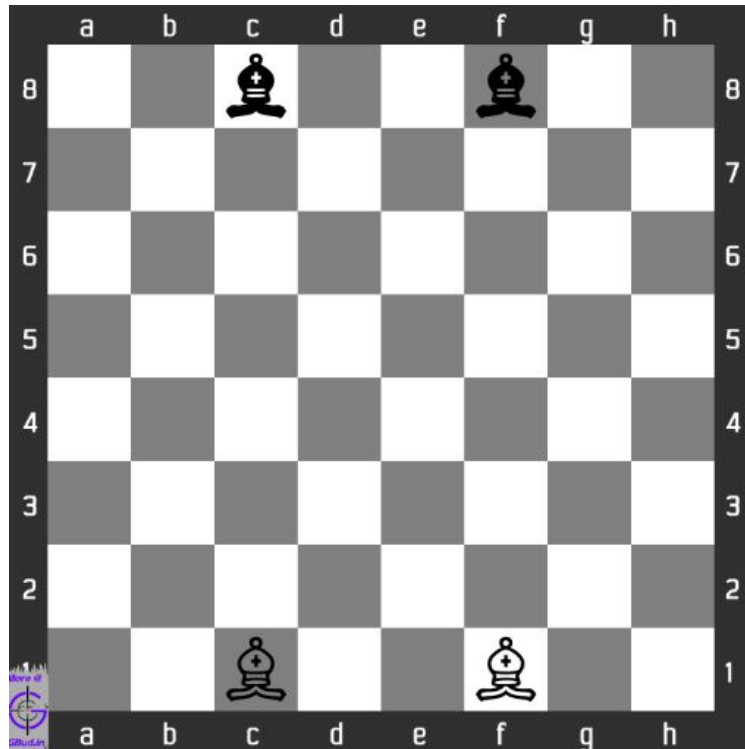


Figure 1.21: Bishop's position at chess board

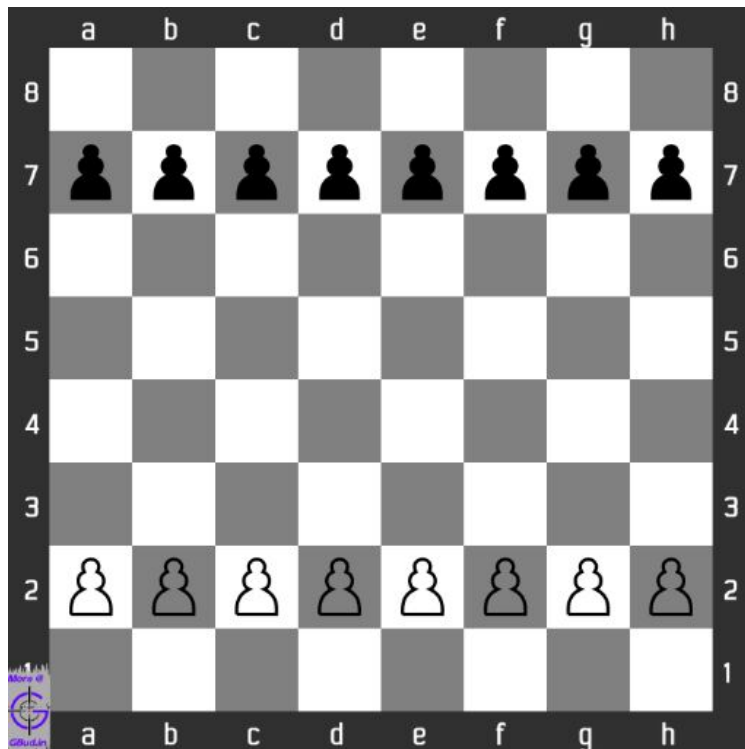


Figure 1.22: Pawn's position at chess board

1.6 Staunton chess set

[Nathenial cooke](#) designed the chess set that is currently used as a standard set of [chess pieces](#). His chess set was promoted by one of the english chess masters [Howard staunton](#) in one of his news paper columns in 1849. Since then, the set of chess pieces is called Staunton set.

The height of the Staunton chess set is usually referred to height of the [King](#) .

Previous article : « [How to read and write chess move notation](#)

Next article : [Learn](#) »

[Back to top](#)

[Contact Us](#)

© GBud Games 2021